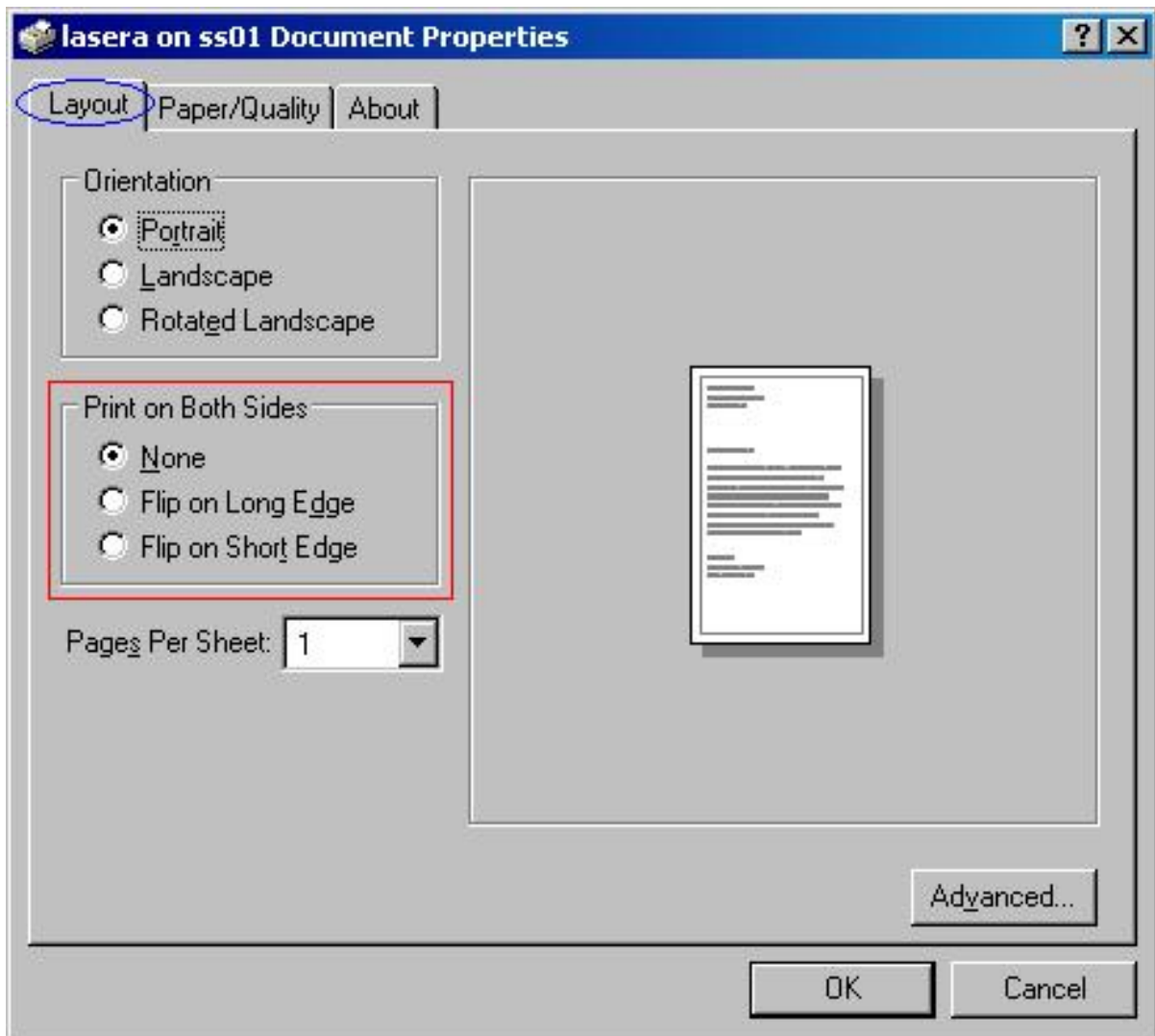


# Printing Single-Sided to Laser A

In your application, choose **File > Print**.

In the **Print** window, select Laser A then click **Properties**. You will see the following interface:

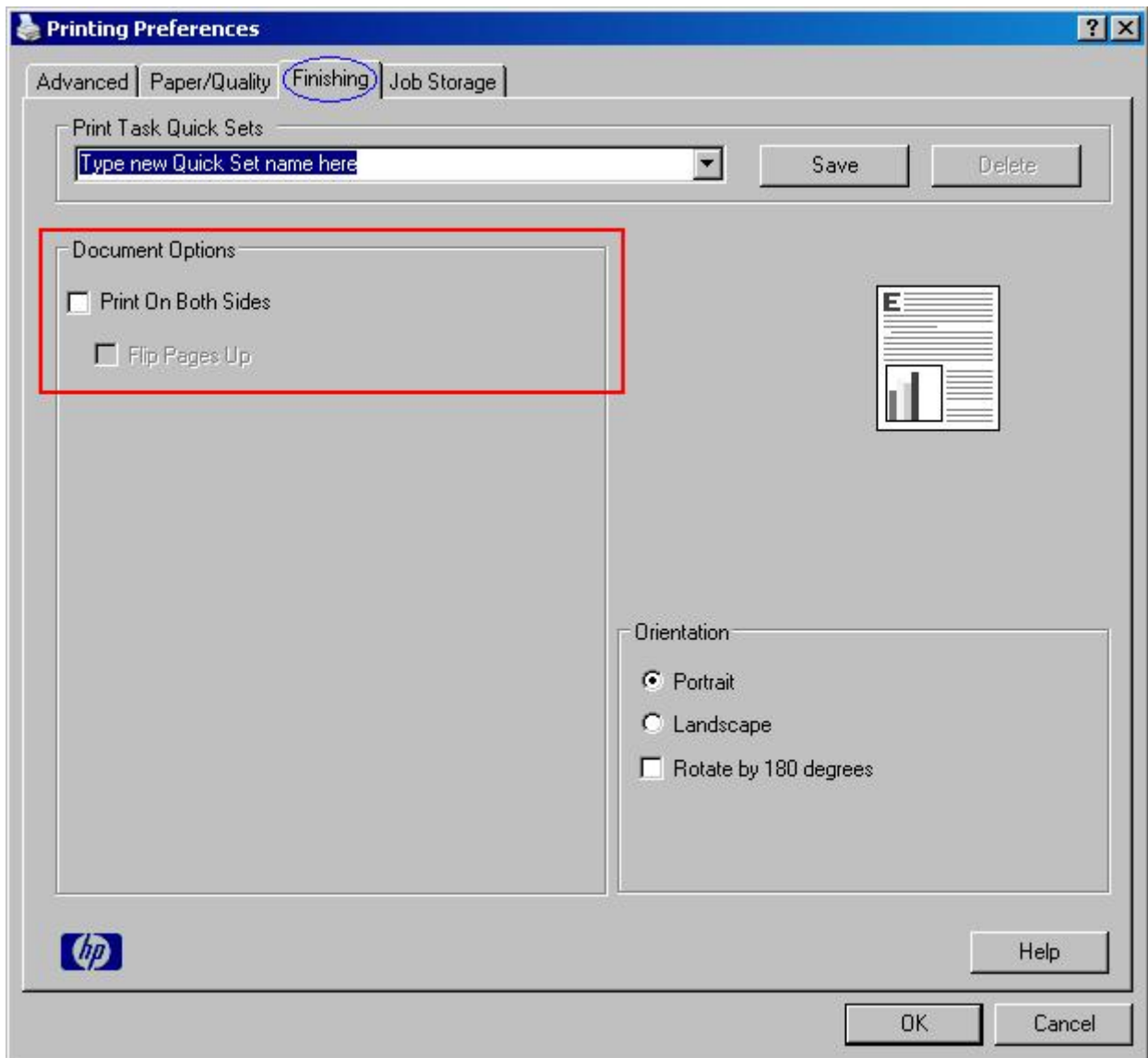


Under the **Layout** tab, if you want to print single-sided, check **None** in the **Print On Both Sides**.

# Printing Single-Sided to Laser B

In your application, choose **File > Print**.

In the **Print** window, select Laser B then click **Properties**. You will see the following interface:



Under the **Finishing** tab, if you want to print single-sided, **UN**check the box labeled **Print On Both Sides**.